



English-taught Exchange Programme
Engineering Science & Technology

Semester by Coursework

by Centrale Lille

École Centrale de Lille, a great choice for your semester abroad!

Studying at École Centrale de Lille for one semester is a **great opportunity for non-French-speaking students to experience the French Grande École** system while living in a major economic and cultural hub of northern Europe, between Paris, Bruxelles and London!

Our mission is to train engineers at the highest level in various disciplines, develop professionals with strong scientific and technical expertise, and nurture talents with the ability to find innovative solutions for today's many challenges.

You will **discover the French-style academic excellence** which includes top lecturers in their fields and research laboratories with top-notch infrastructure.

École Centrale de Lille is open to the world and welcomes students and researchers from across the globe...



Centrale Lille is entering a new era in 2025 with a new 10-year Strategic Plan designed to amplify its role as a key driver in the transformation of industries toward a sustainable future.



The exchange programme

École Centrale de Lille has designed a **semester-long programme fully taught in English** and granting access to a large selection of course units to **international students coming from our academic partners worldwide**.

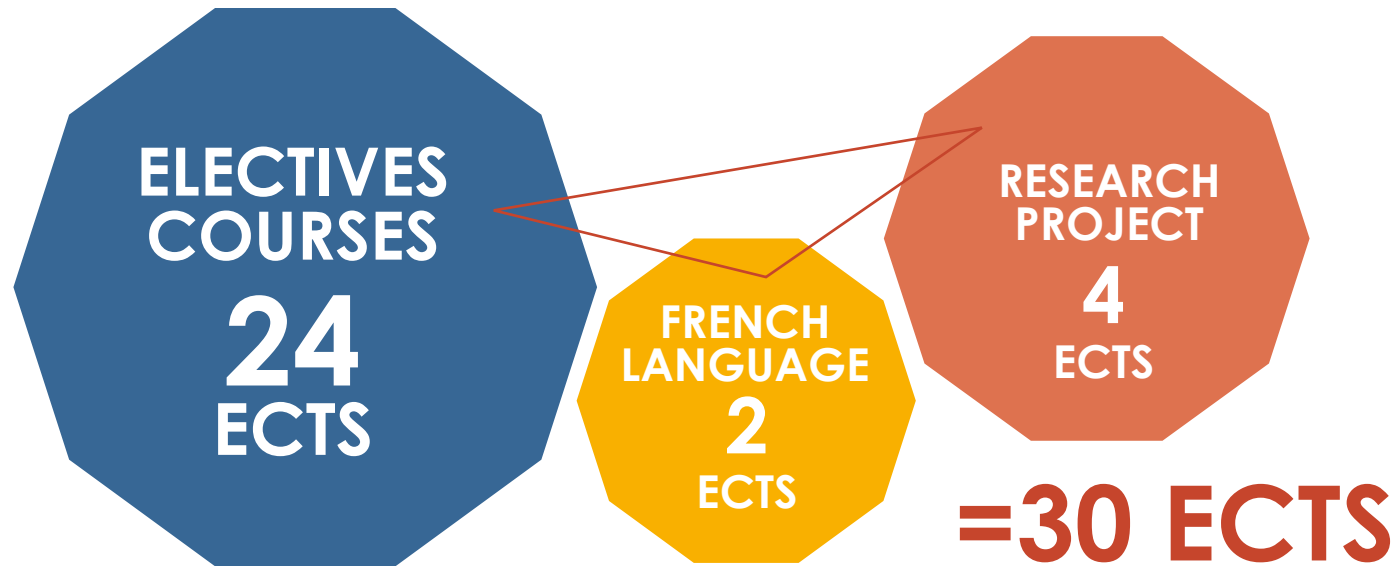
The duration of the programme is one full academic semester **from February to July**, for which participants receive **30 ECTS Credits**.

The core of the programme covers a choice of **6 elective courses (3 per half-semester)**. These elective courses are taught in English and must be chosen within the list of available subjects.

In addition, the school provides students with **French Language classes** and students participate in a **semester-long research project in a lab** supervised by one of our researchers.

Full Semester Programme

February to July



1 ECTS credit = circa 24hrs (12hrs face to face teaching + 12hrs for personal work)

Choose your elective courses

The teaching and learning team has selected a series of elective courses in each of the main teaching areas of the École Centrale de Lille's curriculum. **Each student is required to take 3 elective courses per half semester.**

List of English-taught elective courses offered in 2025-26:

Design and Control of an Automated Production Line

Electronic for Biomedical Engineering

Rapid Prototyping of Sensors Systems

Smart Decision

Biorefineries

Smart Systems

Wave Imaging

Object-Oriented Programming

Representation of Signals and Inverse Problems

Geotechnics and Tunnels for Smart Cities

Simulation of unit operations

Advanced Physics

Optimization and Prescriptive Analysis

Quantum Theory of the Solid State

Sustainable Entrepreneurship

Sustainable Project Management

Electronic for Biomedical Engineering

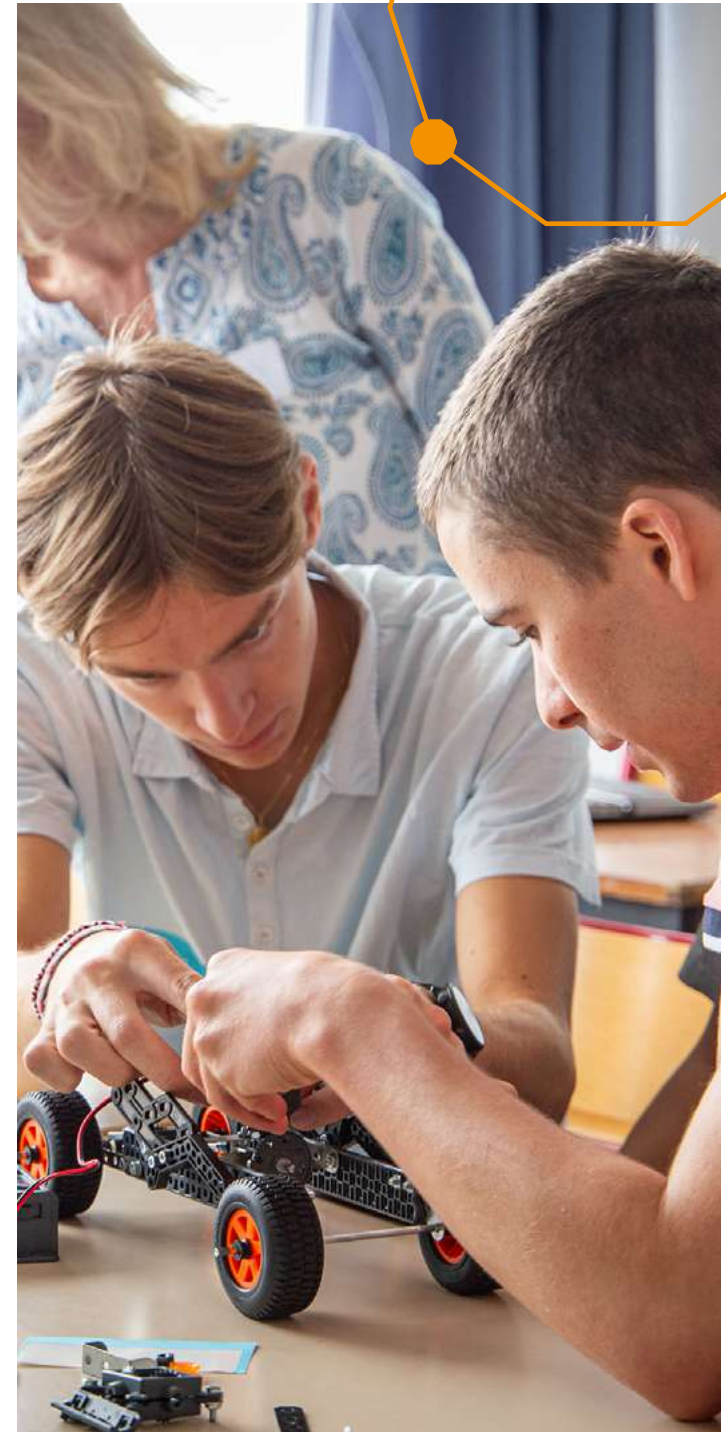
Biomedical sensors are essential for monitoring health and diagnosing diseases. Common clinical sensors such as ECG, EEG, EMG, and PPG convert physiological signals into electrical data for medical analysis.

The Electronics for Biomedical Engineering elective introduces analogue electronics and signal processing for medical instrumentation, combining theory and hands-on practice. Students design a complete acquisition chain through a mini-project involving sensors such as ECG, PPG, LVDT, and EIS.

Optimization and Prescriptive Analysis

Analytics is a field of data science that helps organizations understand past events, anticipate future outcomes, and make informed decisions. Prescriptive analytics focuses on recommending optimal decisions to achieve specific goals by considering constraints, resources, and available data.

This course introduces the theory and practice of optimisation for prescriptive analytics, covering techniques such as linear and integer programming, heuristics, and large-scale optimisation problems.



The Research Project

Our institution is a prominent actor in research at the service of the economy with **4 research themes** that are cross-disciplinary with an international scope and a societal dimension: Digital Technology, Health, Energy, Environment.

The Research Project introduces students with the reality of scientific research with a semester-long experience in the life of a laboratory, helping them comprehend the roles of each stakeholder and the financial aspects of research projects.

This course unit offers students the opportunity to familiarize themselves with the scientific research approach through an immersion period in one of the institution's labs: bibliographic review analysis to comprehend the latest developments on a specific topic, (re)wording of the subject, making hypothesis, ideating solutions, looping back on the hypothesis, communicating results in writing and orally...

Our research laboratories

Researchers at Centrale Lille contribute to the research projects of **7 different labs in Lille:**

- CRISTAL**, UMR 9189, Research Centre in Computer Science, Signal and Automatics of Lille
- IEMN**, UMR 8520, IResearch Institute in Electronics, Microelectronics and Nanotechnology
- LMFL**, FRE 2017, Lille Fluid Mechanics Laboratory
- L2EP**, EA 2697, Lille Electrotechnics and Power Electronics Laboratory
- LaMCUBE**, FRE 2016, Multiphysic and Multiscale Mechanics Laboratory
- UCCS**, UMR 8181, Catalysis and Solid-State Chemistry Research Unit
- UMET**, UMR 8207, Materials and Transformation Research Unit



Welcoming International Students

Providing the **best possible experience to international students** is one of our priorities. We tailor our welcoming and induction arrangements to the specific needs of each individual in close connection with our International Student Unions (Club TIME & Welcome Club).

The Office for International and Academic Relations organises the arrival & pick-up at the train station or Lille Airport and offers permanent administrative support during the whole stay at Centrale Lille.

Students joining the Summer Research Immersion Programme will be accommodated in Centrale Lille's student residence, an affordable housing solution. **A special Arrival Kit may also be reserved beforehand**, which includes kitchenware, bathroom towels and linen.

Residence

International Students are hosted with other École Centrale de Lille's students at the **Léonard de Vinci Residence located 10 minutes walking distance from the school**. The residence offers a very friendly environment with regular events being organised all year long.

Students may choose between two types of flats: **individual studios** (circa 20sqm, incl. a bedroom, a kitchenette, an en suite shower room with toilets) **or 2-person flats** (circa 40sqm with two individual bedrooms, a common kitchen and a shared shower room with separate toilets).



FROM €289 TO €499
MONTHLY ALL CHARGES
INCLUDED

AN ARRIVAL KIT
IS AVAILABLE ON
DEMAND FOR A FEE

IN
ADDITION



**Bienvenue en France
Quality Certification**



Our commitment to providing high quality support and guidance to international students has been recognised at the highest level with the award of the Bienvenue en France 3* quality certification (2025-2030).

Photo @clubtime.eclille on facebook



Culture, Tourism and Social activities

Welcoming and cheerful, Lille is a vivid city and a great place to live. The city boasts a rich architectural, industrial and cultural heritage with a great abundance of peculiar places and plenty of activities of all kinds.

Cultural animations, artistic and sporting events come in succession all year long, allowing people to discover the various aspects of the city and its vicinity.

The well-earned reputation of friendliness granted to people in Northern France makes Lille a very festive place where you can enjoy a richness of pubs, restaurants, theatres and concert halls.

The whole Hauts-de-France region enjoys a **remarkable diversity of beautiful landscapes**: farmland, sand dunes, endless beaches, white chalk cliffs, forests, former coal mines sites, industrial cities, state-of-the-art buildings, you name it! And, as those who live here know very well, we do have beautiful weather in North of France too!

Lille is well connected with the rest of France and Europe with two train stations, an airport and numerous highways. Paris is just one hour away by train and it will only take you one hour driving to reach the coastline. The French Riviera and South of France are also a stone's throw from Lille by plane.





Apply to the exchange programme

Applications to the semester exchange programme in English are reserved to non-French-speaking students from Centrale Lille's partner universities. **The programme is especially suitable for students in their 1st year of Master's Degree or equivalent. Final year Bachelor students (or equivalent) may also apply.**

- **Nomination deadline : October 15, 2026**
- **Application deadline : October 31, 2026**

1 Apply through the Office for International Relations of your university

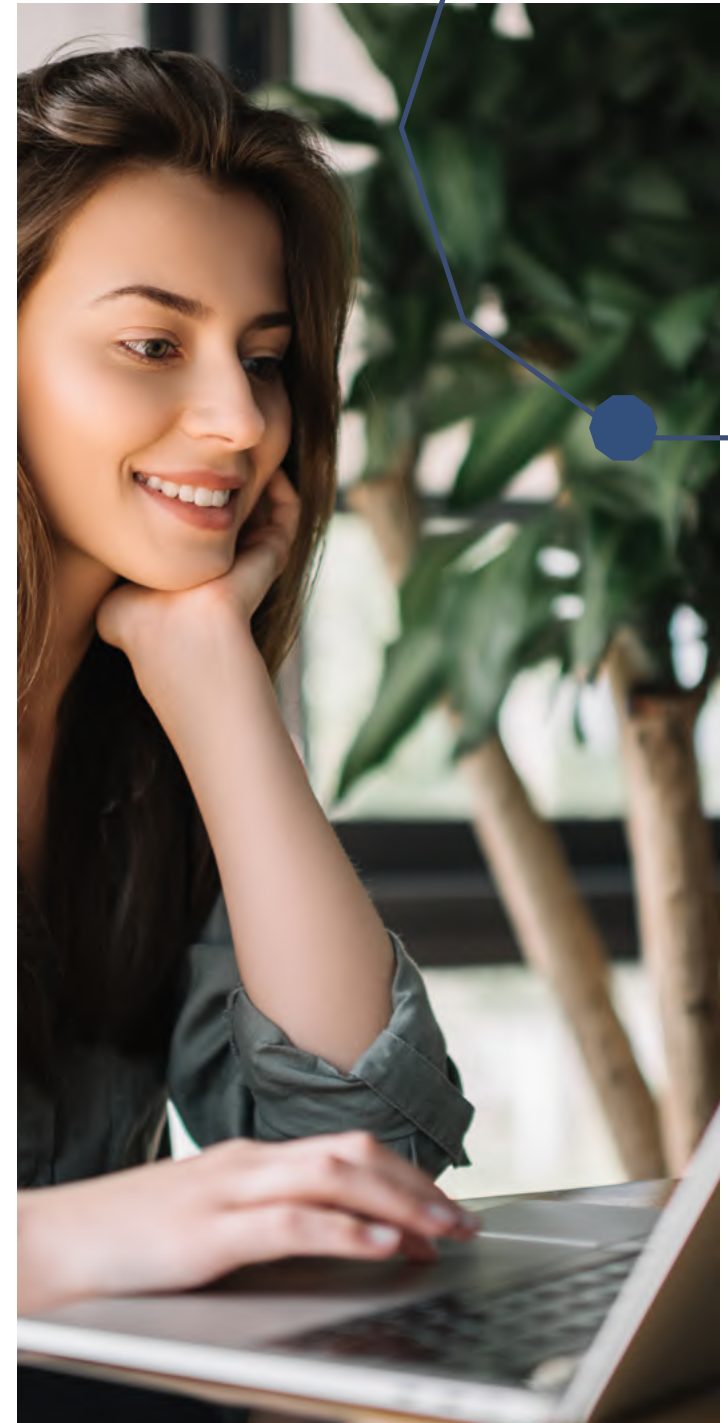
2 Once nominated by your university, fill out the online registration form on Centrale Lille's platform*

3 Download and fill out the application documents

4 Submit your application and supporting documents

5 Results will be communicated to applicants before November 30, 2026

*link to be communicated to each candidate individually





For more information on this programme, contact the Office for International and Academic Relations : international.mobility@centralelille.fr

Or log on our website:

<https://centralelille.fr/en/international/venir-etudier-a-centrale-lille/>

Follow us:     