

Chemical Science and Engineering Exchange Programme

Study Tracks in English - Fall Semester 2026

www.centralelille.fr

Chemical Science and Engineering for a sustainable world

For over 130 years, Lille National Graduate School of Chemistry (ENSCL) has been providing high level multidisciplinary education in chemical science and engineering. In 2020, ENSCL merged with École Centrale de Lille to form Centrale Lille Institute of Technology and became one of its main graduate engineering programmes.

ENSCL engineering studies cover the major fields of chemistry to equip you with the scientific and technical skills essential to the work of a chemical engineer.

The school's partnership with internationally renowned research laboratories keeps students abreast of scientific and technological innovation.

This broad education makes an ENSCL graduate a responsible engineer and a perfect fit in today's industrial world.

You will discover the **French-style academic excellence** which includes top lecturers in their fields and research laboratories with top-notch infrastructure.



Centrale Lille is entering a new era in 2025 with a new 10-year Strategic Plan designed to amplify its role as a key driver in the transformation of industries toward a sustainable future.



ENSCL, a School of Centrale Lille Institute of Technology

The institution primarily trains engineers through **its four graduate engineering programmes** among which ENSCL for chemical engineers. With more than 2,200 students and more than 250 research professors, Centrale Lille is a **leader in engineering education in Northern France**.

Centrale Lille also plays an important role in innovation and research. Its **seven research laboratories** carry out innovative projects, adding to scientific knowledge and contributing to business innovation.

Centrale Lille's four research themes

Cross-disciplinary subjects with an international scope and a societal dimension:
Health, energy, environment, digital technology

Our research laboratories

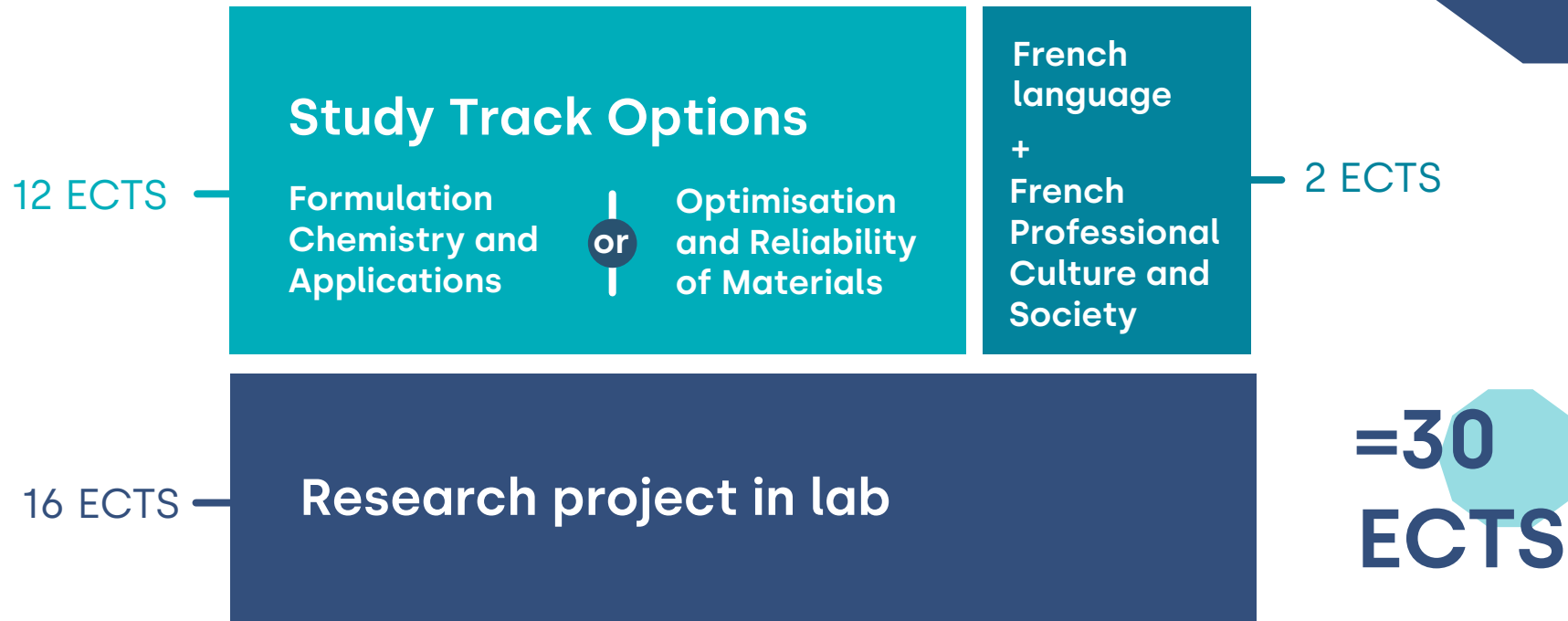
Researchers at Centrale Lille contribute to the research projects of **7 different labs in Lille**:

- CRIStal**, UMR 9189, Research Centre in Computer Science, Signal and Automatics of Lille
- IEMN**, UMR 8520, IResearch Institute in Electronics, Microelectronics and Nanotechnology
- LMFL**, FRE 2017, Lille Fluid Mechanics Laboratory
- L2EP**, EA 2697, Lille Electrotechnics and Power Electronics Laboratory
- LaMCUBE**, FRE 2016, Multiphysic and Multiscale Mechanics Laboratory
- UCCS**, UMR 8181, Catalysis and Solid-State Chemistry Research Unit
- UMET**, UMR 8207, Materials and Transformation Research Unit



The exchange programme in a nutshell...

September to January
Full Semester Programme
Open to graduate students only



1 ECTS credit = circa 24hrs (12hrs face to face teaching + 12hrs for personal work)

Overview of the study tracks



Designing the materials of tomorrow

Materials surround us: metals, glasses, ceramics, plastics, and composites.

These materials must have certain properties—they must be tough or light, for example—and hold up under harsh conditions, e.g., rain, cold, heat, temperature variations, or fire.

The study track *Optimization and Reliability of Materials* teaches how to develop solutions for problems that arise in the industrial use and manufacture of materials. You will discover and optimize their properties and behaviour using cutting-edge digital and analytic tools.



Learn to develop and optimize formulations

for cosmetics, paints, inks, detergents, fragrances, fuels, glues, and concretes.

Apply your theoretical knowledge and understanding of **complex physicochemical phenomena to mix raw materials** that are often otherwise incompatible in order to obtain stable, macroscopically homogeneous finished products with defined end-use properties.

Master the selection of product ingredients based on your understanding of their physicochemical and functional properties as well as mechanism of action, while adhering to the **technical, regulatory, financial, safety, and environmental constraints** set by the specifications.

Semester-long Research Project

The research projects may be hosted by one of the following laboratories:



Students will produce a research report on their project and defend it in front of a jury.

300 Hours
of laboratory
work

2 to 3 days per week



Culture, Tourism and Social activities

Welcoming and cheerful, Lille is a vivid city and a great place to live. The city boasts a rich architectural, industrial and cultural heritage with a great abundance of peculiar places and plenty of activities of all kinds.

Cultural animations, artistic and sporting events come in succession all year long, allowing people to discover the various aspects of the city and its vicinity.

The well-earned reputation of friendliness granted to people in Northern France makes Lille a very festive place where you can enjoy a richness of pubs, restaurants, theatres and concert halls.

The whole Hauts-de-France region enjoys a **remarkable diversity of beautiful landscapes**: farmland, sand dunes, endless beaches, white chalk cliffs, forests, former coal mines sites, industrial cities, state-of-the-art buildings, you name it! And, as those who live here know very well, we do have beautiful weather in North of France too!

Lille is well connected with the rest of France and Europe with two train stations, an airport and numerous highways. Paris is just one hour away by train and it will only take you one hour driving to reach the coastline. The French Riviera and South of France are also a stone's throw from Lille by plane.



Welcoming International Students

Providing the **best possible experience to international students** is one of our priorities. We tailor our welcoming and induction arrangements to the specific needs of each individual in close connection with our International Student Unions (Club TIME & Welcome Club).

The Office for International and Academic Relations organises the arrival & pick-up at the train station or Lille Airport and offers permanent administrative support during the whole stay at Centrale Lille.

Students joining the Summer Research Immersion Programme will be accommodated in Centrale Lille's student residence, an affordable housing solution. **A special Arrival Kit may also be reserved beforehand**, which includes kitchenware, bathroom towels and linen.

Residence

International Students are hosted with other École Centrale de Lille's students at the **Léonard de Vinci Residence located 10 minutes walking distance from the school**. The residence offers a very friendly environment with regular events being organised all year long.

Students may choose between two types of flats: **individual studios** (circa 20sqm, incl. a bedroom, a kitchenette, an en suite shower room with toilets) **or 2-person flats** (circa 40sqm with two individual bedrooms, a common kitchen and a shared shower room with separate toilets).



FROM €289 TO €499
MONTHLY ALL CHARGES
INCLUDED

AN ARRIVAL KIT
IS AVAILABLE ON
DEMAND FOR A FEE

IN
ADDITION



**Bienvenue en France
Quality Certification**



Our commitment to providing high quality support and guidance to international students has been recognised at the highest level with the award of the Bienvenue en France 3* quality certification (2025-2030).

Photo @clubtime.eclille on facebook

Apply to the exchange programme

Applications to the semester exchange programme in English are reserved to students from Centrale Lille's partner universities. **The programme is suitable for students at Master's Degree level.**

- **Nomination deadline : April 15, 2026**
- **Application deadline : April 30, 2026**

1 Apply through the Office for International Relations of your university

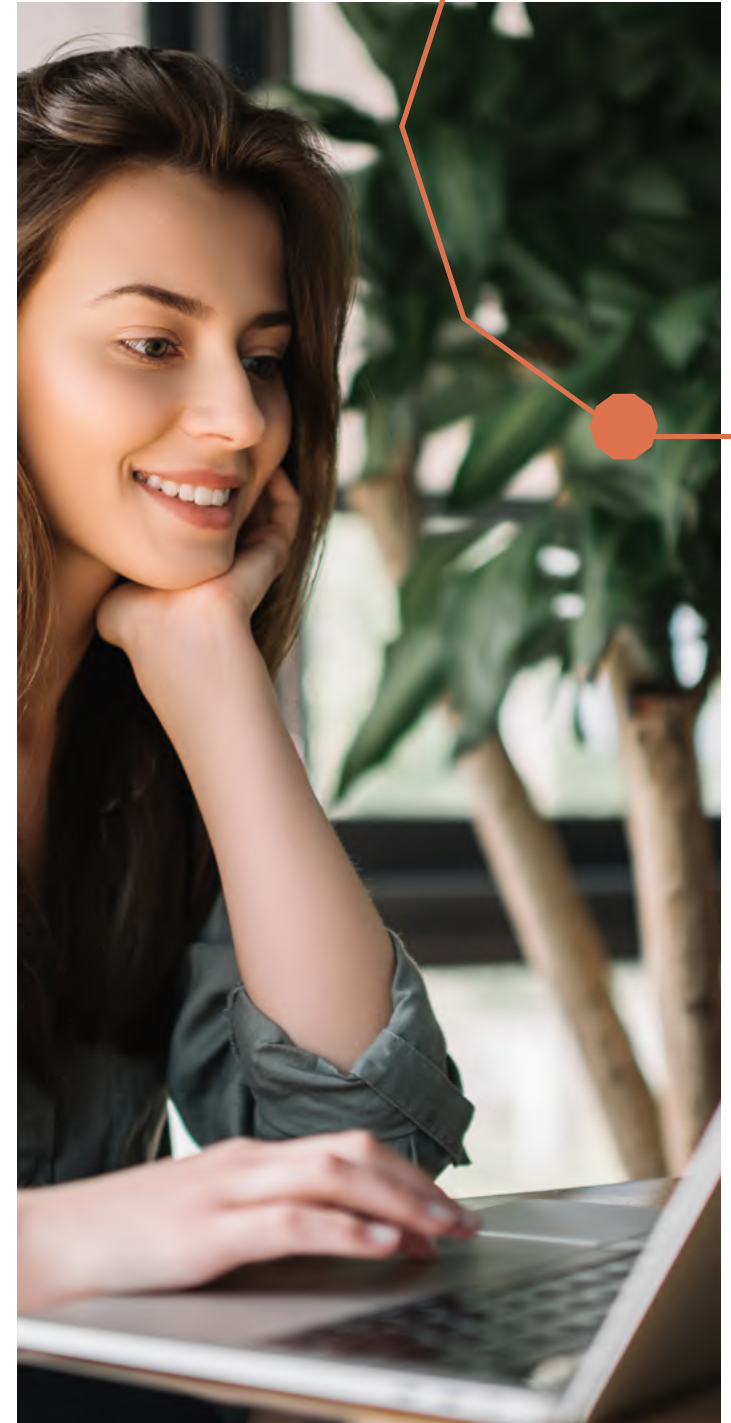
2 Once nominated by your university, fill out the online registration form on Centrale Lille's platform*

3 Download and fill out the application documents

4 Submit your application and supporting documents

5 Results will be communicated to applicants before May 31, 2026

*link to be communicated to each candidate individually



ECOLE NATIONALE SUPERIEURE DE CHIMIE DE LILLE



For more information on this programme, contact the Office for International and Academic Relations : international.mobility@centralelille.fr

Or log on our website:

<https://centralelille.fr/en/international/venir-etudier-a-centrale-lille/>

Follow us:     